

Installing the driver

This simple procedure is generally useful because it can be used on any device. Before installing the driver, please verify that your audiophileo device is working properly with the standard windows driver.

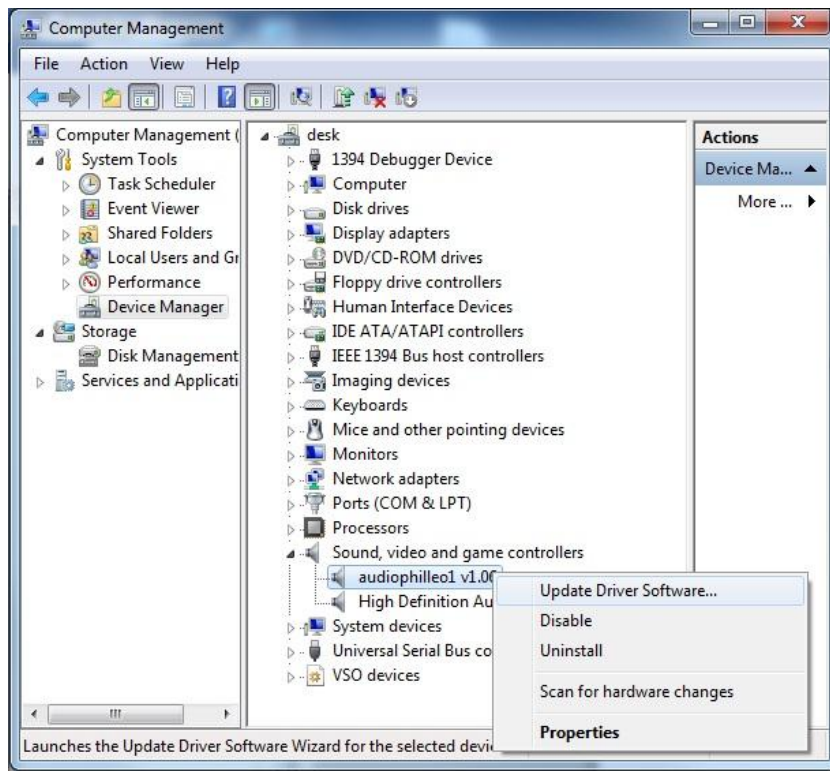
Note that the custom driver only needs to be installed if your DAC supports 176Khz and 192Khz sample rates or if you wish to play DTS or Dolby Digital content to a receiver (the Microsoft USB Audio driver is not capable of these features). This driver is compatible with Windows Vista and Windows 7 32bit. Windows XP SP3 does not require this driver and will support 192Khz with the default driver. This driver requires firmware version 1.06 or above. Please update the firmware before installing this driver.

Steps:

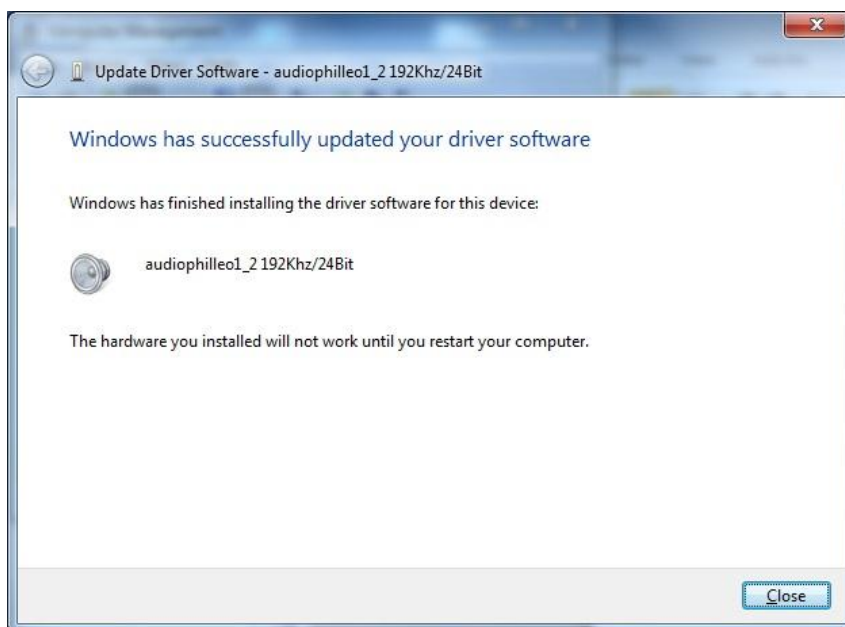
1. Unzip the contents of this zip file into a folder anywhere on your hard disk. You can do this by right clicking on the zip file and selecting “Extract All...” from the popup menu.
2. Click on the windows “Start” menu in the bottom left of the screen, then right click on “Computer” and left click on “Manage”



3. If a security message pops up, select yes. The “Computer Management” console windows will open. Left click “Device Manager”, double click “Sound, video and game controllers”, then right click “audiophileoX v1.0x” and select “Update Driver Software...”.



4. In the popup window, click “Browse my computer for driver software”, then click “Let me pick from a list of device drivers on my computer”, then click “Have Disk...”, then click “Browse”. Browse to the folder where you unzipped this file and into the “32Bit” folder (when using 64 bit windows, browse into the “64Bit” folder). Click “OK”, then “Next”.
5. Finally the following window should show that the update succeeded.



8. Congratulations, you are done.

Uninstalling the driver

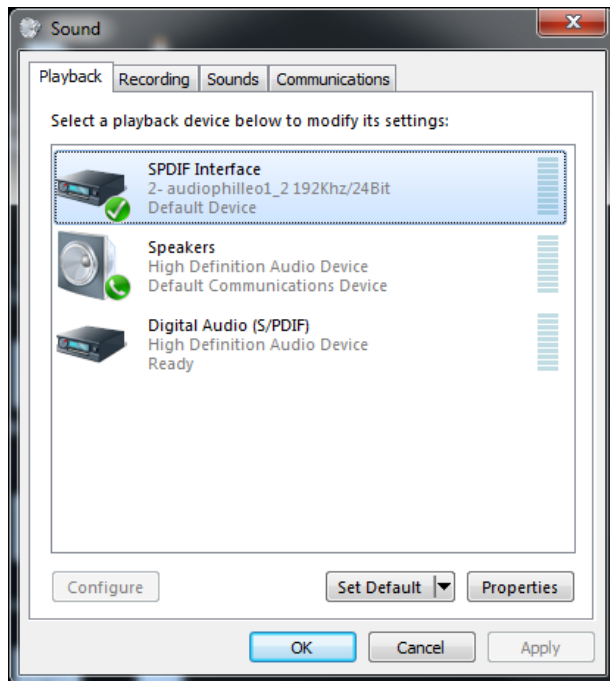
1. Uninstalling is very simple. Repeat steps 3 and 4 above except for step 4 select the menu option “Uninstall”. In the popup windows, select “delete the driver software for this device” and click “OK”. The driver will now be uninstalled.



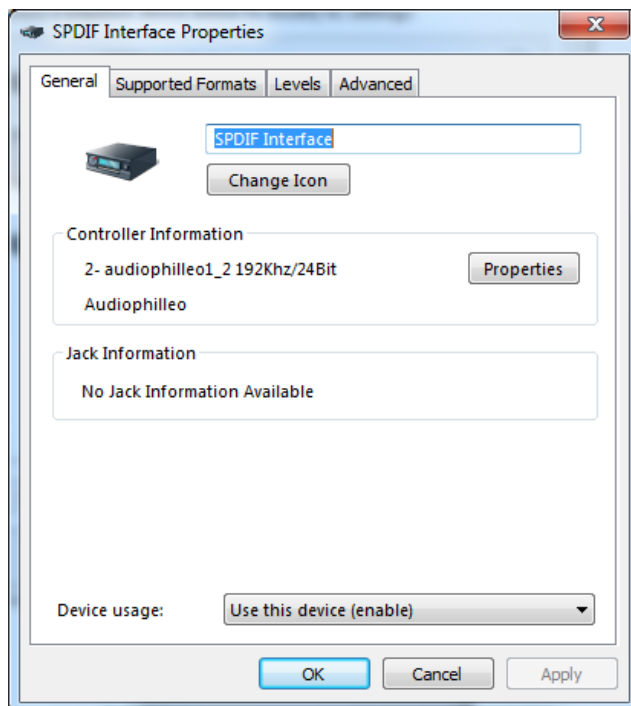
2. After uninstall is complete you can unplug the device, wait a few seconds, plug the device back in, and windows will install the default driver again.

Configuring the driver

1. Go to the “Sound” control panel app



2. Double click on the audiophileo “SPDIF Interface”.



3. Go to the “Supported Formats” tab, and enable the surround sound formats that your DAC or receiver supports. If you have a stereo DAC, you should uncheck the “DTS Audio” and “Dolby Digital” check boxes. Otherwise, windows could play DTS or Dolby Digital through the audiophile device, which will be full volume white noise (very loud).

